

## TECHNICAL SHEET

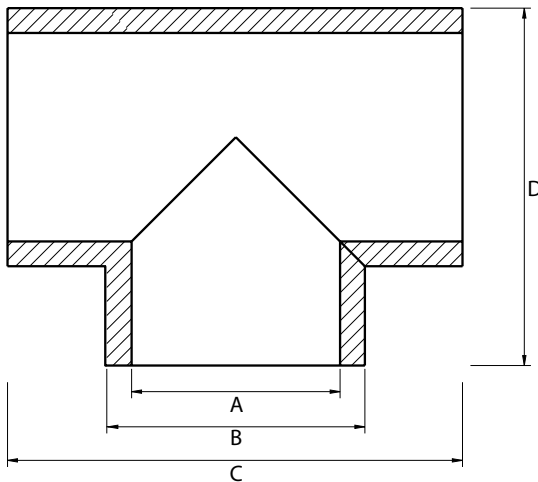


EPE T-piece, insulating and airtight. It minimizes heat loss and prevents the formation of condensation. The smooth inner surface also reduces pressure loss. Single pack.



### PRODUCT PROPERTIES

- Well-insulated
- Low pressure drop due to smooth inner surface
- Non-porous
- Airtight
- Doesn't rust
- Compact, mechanical connections (i. e. no tape or sealants required)
- Extremely light material
- Easy and safe to cut
- Impact resistant (i. e. no dents)
- Easy to dismantle for maintenance
- Zero carbon footprint



	A	B	C	D	Cod.
<b>DN 125</b>	125	157	276	216	7046265
<b>DN 160</b>	160	192	316	254	7046266
	[mm]				

### TECHNICAL DATA

FEATURES	VALUE	U.M.	STANDARD
Material	EPE		
Pipe thickness	16	mm	
Density	30	Kg/m <sup>3</sup>	
Heat Transfer coefficient	0,041	W/(m · K)	EN 12667
Thermal Resistance	0,39	(m <sup>2</sup> · K)/W	
Temperature Range	Min -30   Max +60	°C	
Fire Class	B1		DIN 4102
Reaction to Fire	B - s2, d0	Euroclass	EN 13501 - 1:2018
Airtightness	D		EN 12237
	ATC 2		EN 16798
Color	Grey		
Function	Transport of air for ventilation and/or heating and/or cooling		

